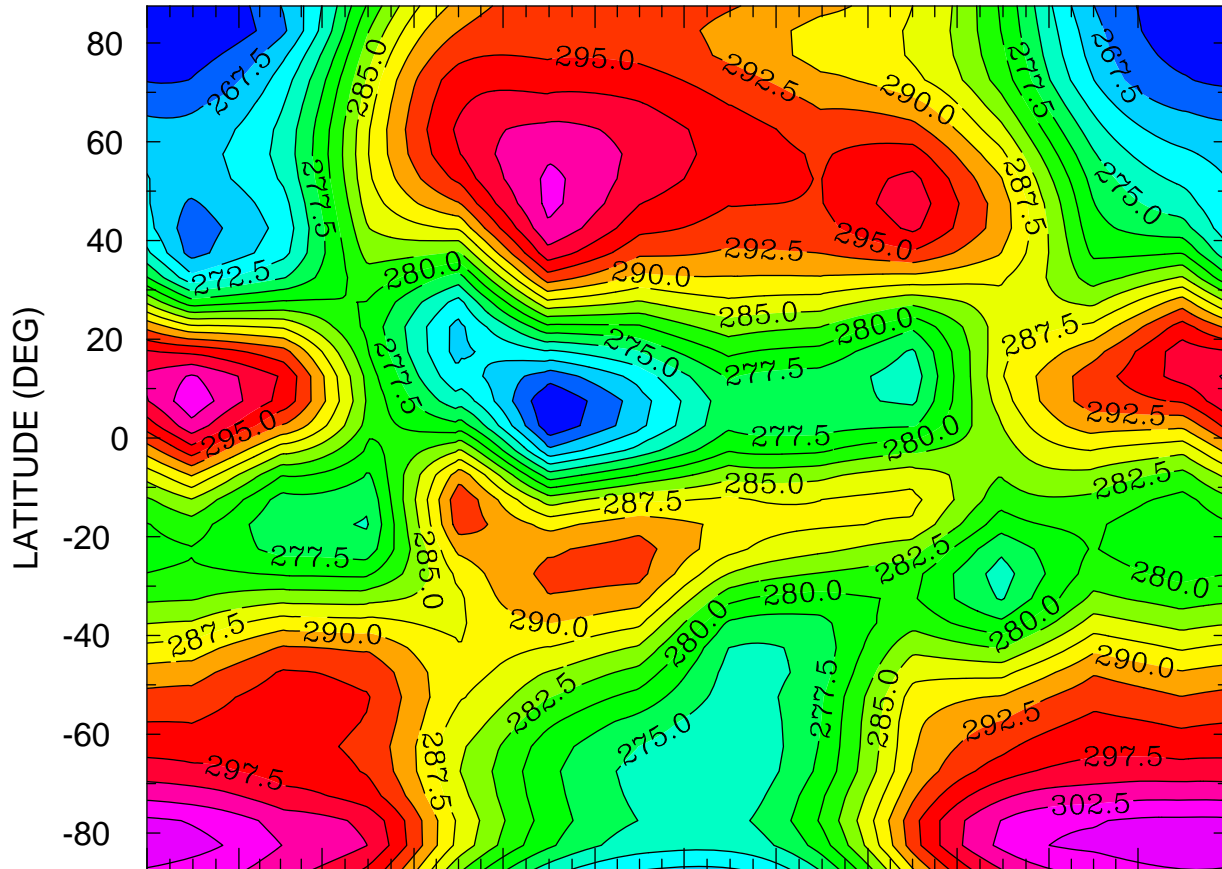


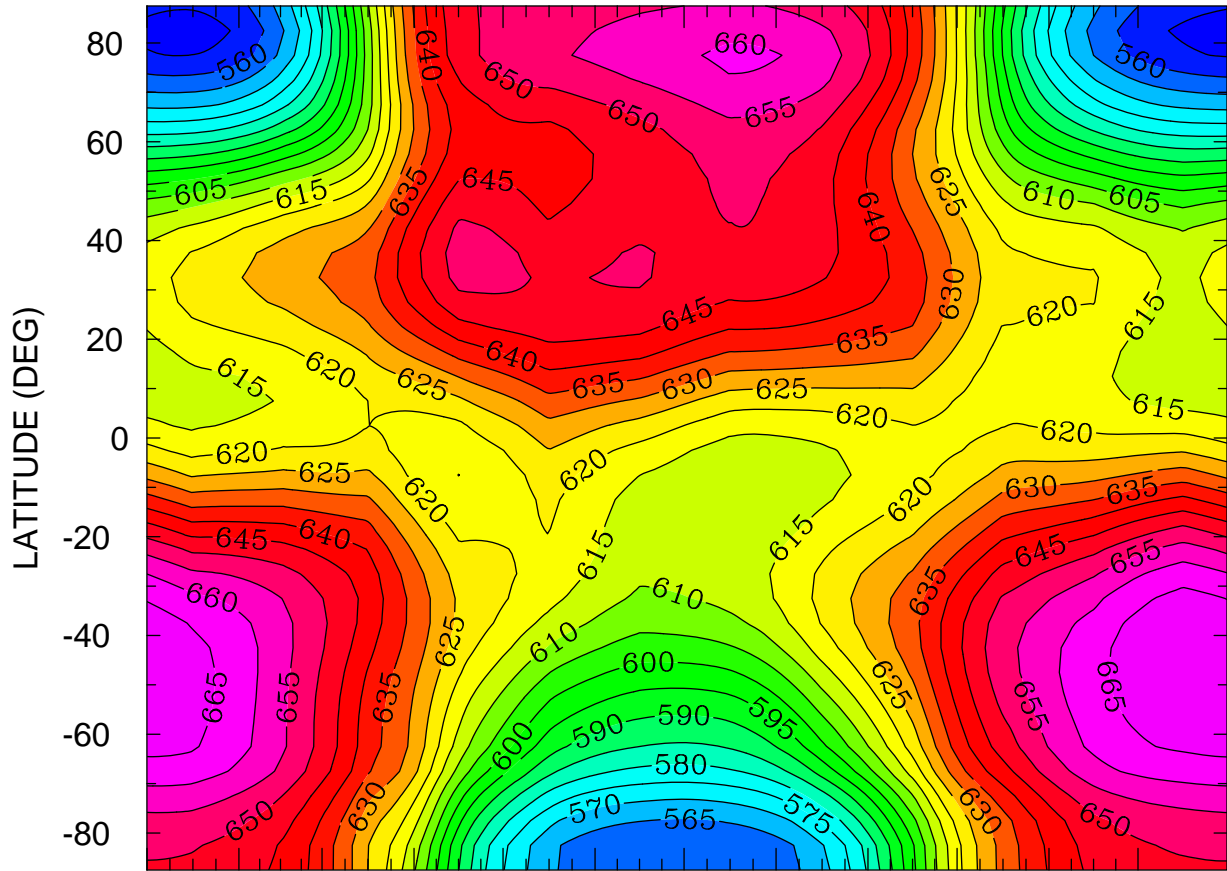
NEUTRAL TEMPERATURE (DEG K)
HEIGHT = 110.0 LONGITUDE = -180.00



JAN FEB MAR APR MAY JUN JUL AUG SEP OCT NOV DEC
MONTH MTIME 001 00:00 TO 365 00:00 BY 1440 MINS

MIN,MAX= 2.6247E+02 3.0662E+02 INTERVAL= 2.5000E+00
FIRST: TGCM.tiegcm1.94.pclim_heelis_001.nc
LAST: TGCM.tiegcm1.94.pclim_heelis_019.nc

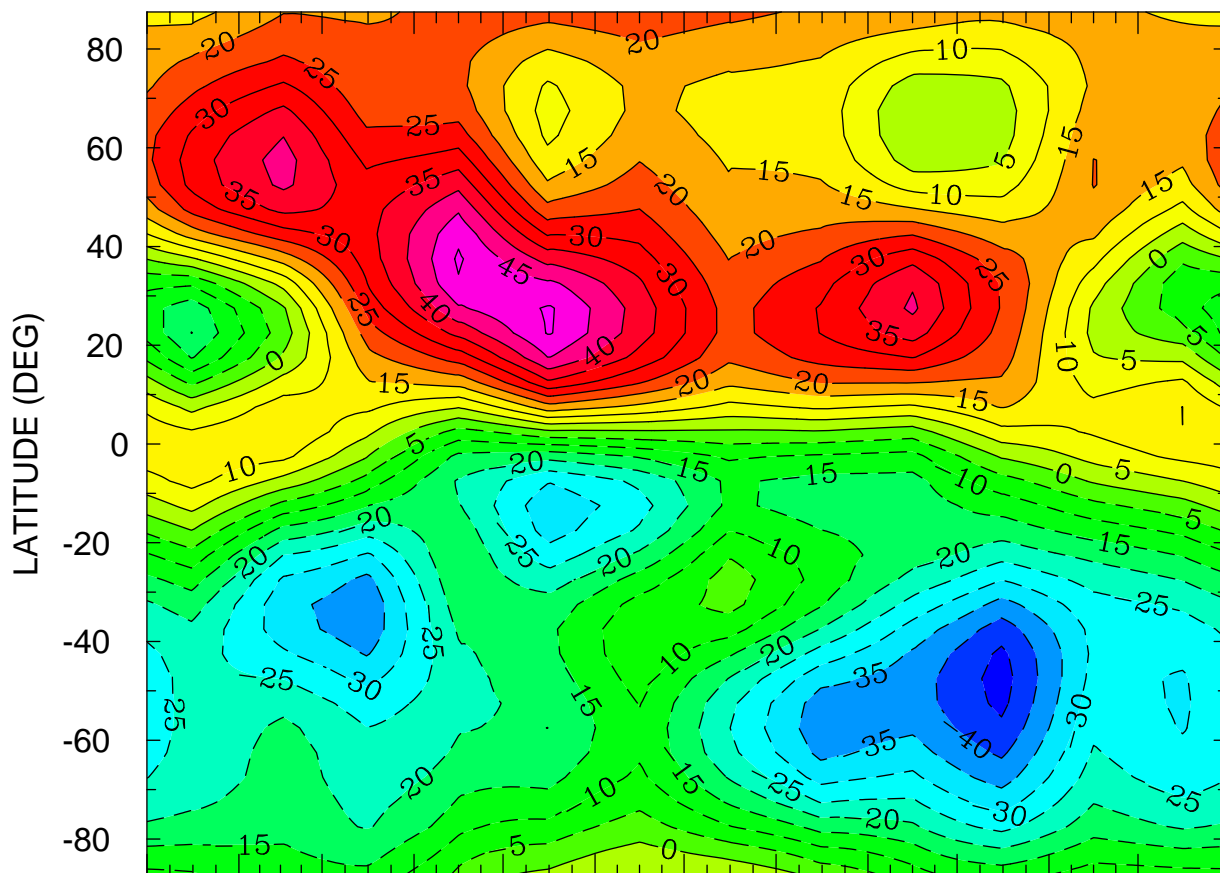
NEUTRAL TEMPERATURE (DEG K)
HEIGHT = 150.0 LONGITUDE = -180.00



JAN FEB MAR APR MAY JUN JUL AUG SEP OCT NOV DEC
MONTH MTIME 00:00 TO 365 00:00 BY 1440 MINS

MIN,MAX= 5.5282E+02 6.6966E+02 INTERVAL= 5.0000E+00
FIRST: TGCM.tiegcm1.94.pclim_heelis_001.nc
LAST: TGCM.tiegcm1.94.pclim_heelis_019.nc

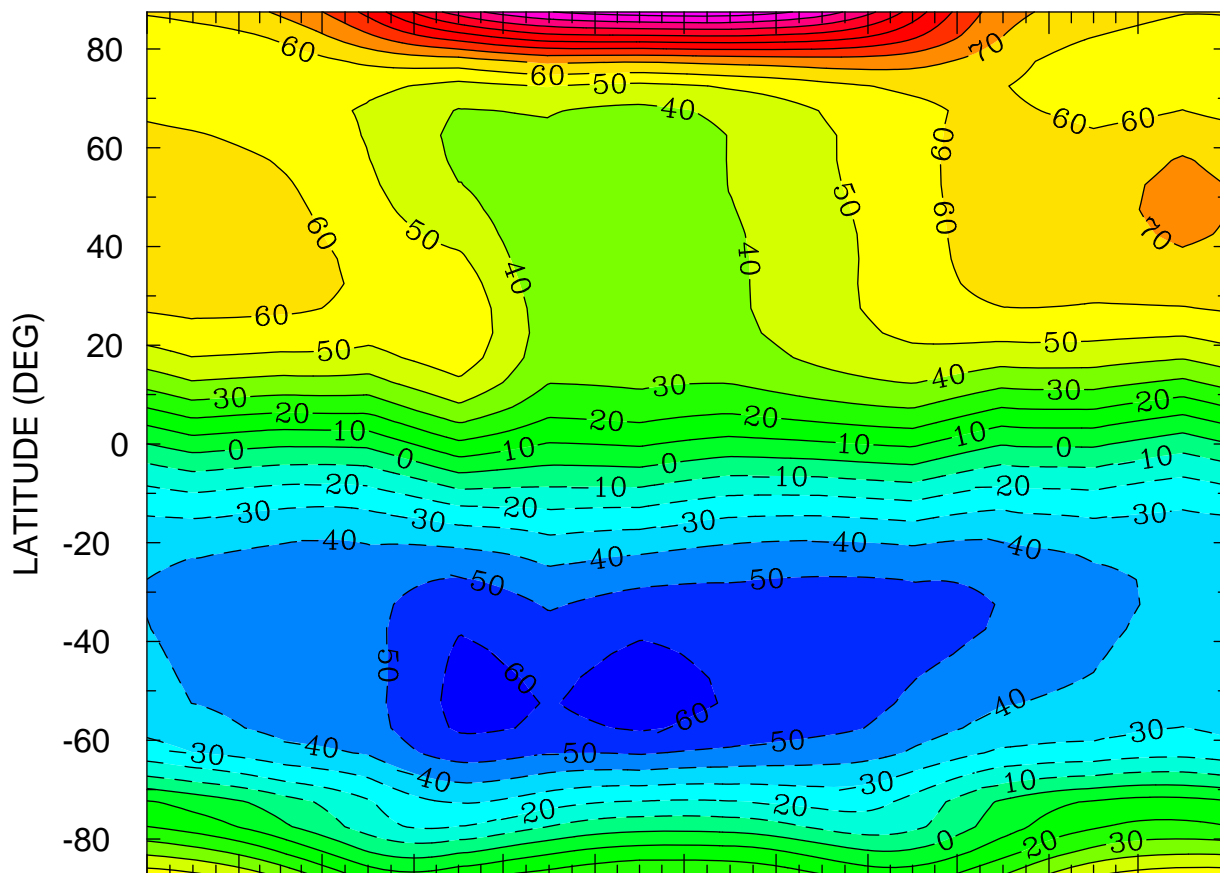
NEUTRAL MERIDIONAL WIND (M/S)
HEIGHT = 110.0 LONGITUDE = -180.00



JAN FEB MAR APR MAY JUN JUL AUG SEP OCT NOV DEC
MONTH MTIME 001 00:00 TO 365 00:00 BY 1440 MINS

MIN,MAX= -4.7108E+01 5.0821E+01 INTERVAL= 5.0000E+00
FIRST: TGCM.tiegcm1.94.pclim_heelis_001.nc
LAST: TGCM.tiegcm1.94.pclim_heelis_019.nc

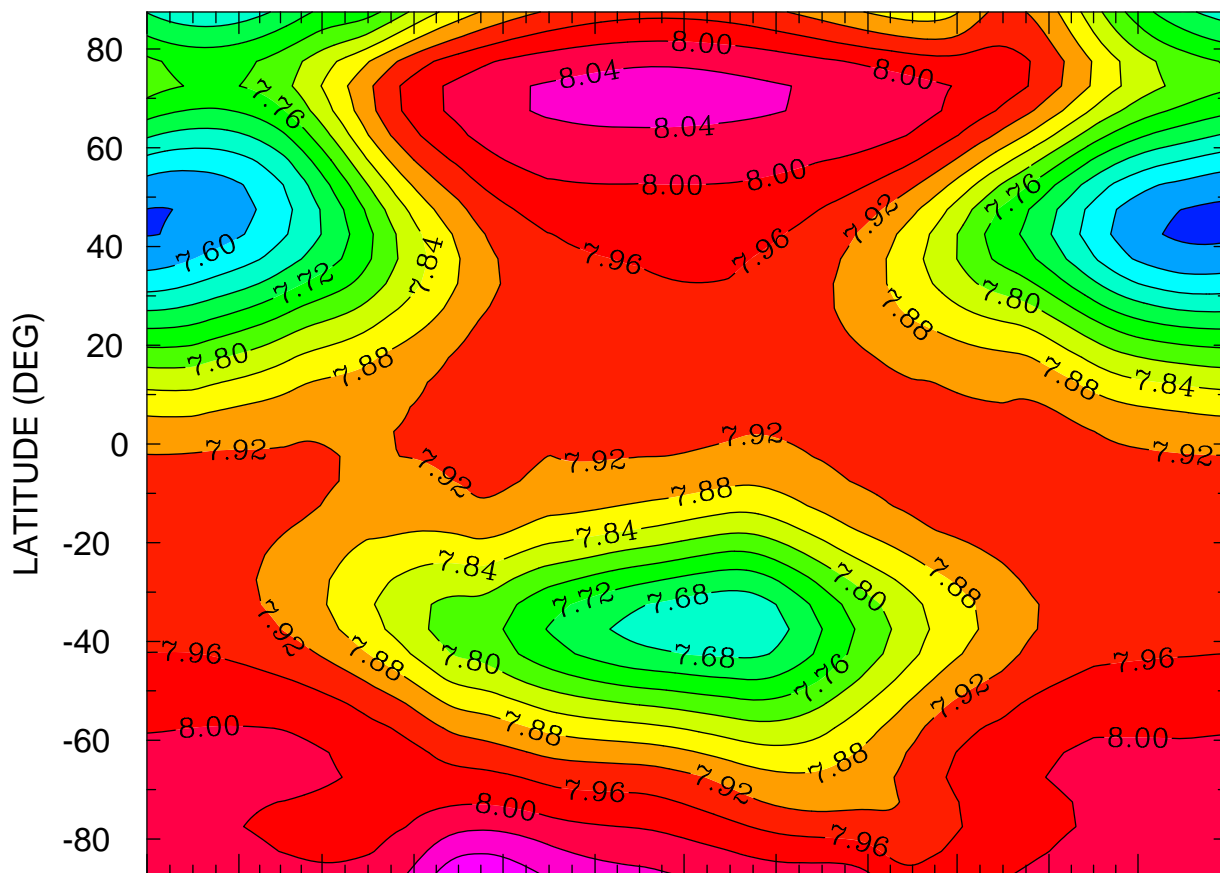
NEUTRAL MERIDIONAL WIND (M/S)
HEIGHT = 150.0 LONGITUDE = -180.00



JAN FEB MAR APR MAY JUN JUL AUG SEP OCT NOV DEC
MONTH MTIME 001 00:00 TO 365 00:00 BY 1440 MINS

MIN,MAX= -6.4516E+01 1.4628E+02 INTERVAL= 1.0000E+01
FIRST: TGCM.tiegcm1.94.pclim_heelis_001.nc
LAST: TGCM.tiegcm1.94.pclim_heelis_019.nc

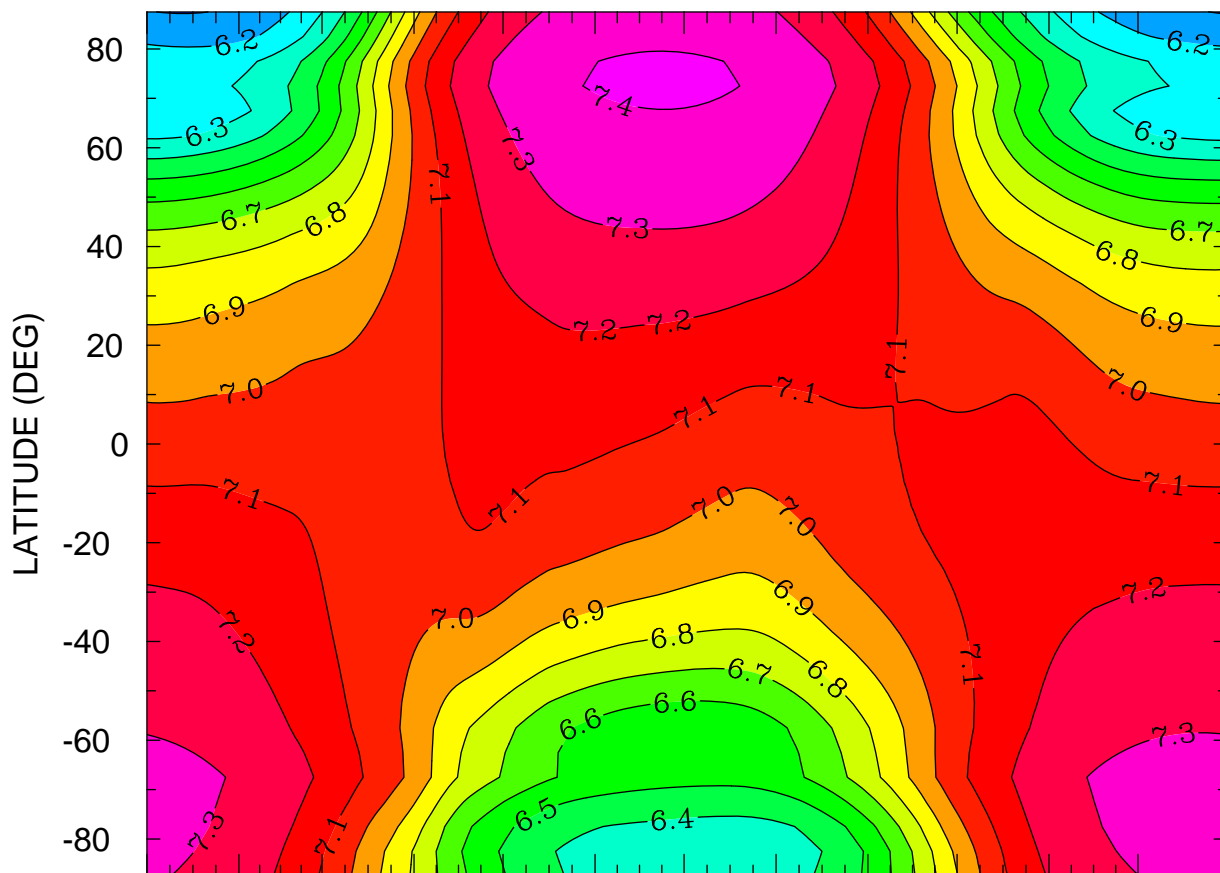
LOG10 NITRIC OXIDE (CM3)
HEIGHT = 110.0 LONGITUDE = -180.00



JAN FEB MAR APR MAY JUN JUL AUG SEP OCT NOV DEC
MONTH MTIME 00:00 TO 365 00:00 BY 1440 MINS

MIN,MAX= 7.5509E+00 8.1119E+00 INTERVAL= 4.0000E-02
FIRST: TGCM.tiegcm1.94.pclim_heelis_001.nc
LAST: TGCM.tiegcm1.94.pclim_heelis_019.nc

LOG10 NITRIC OXIDE (CM3)
HEIGHT = 150.0 LONGITUDE = -180.00



JAN FEB MAR APR MAY JUN JUL AUG SEP OCT NOV DEC
MONTH MTIMES 001 00:00 TO 365 00:00 BY 1440 MINS

MIN,MAX= 6.0950E+00 7.4159E+00 INTERVAL= 1.0000E-01
FIRST: TGCM.tiegcm1.94.pclim_heelis_001.nc
LAST: TGCM.tiegcm1.94.pclim_heelis_019.nc