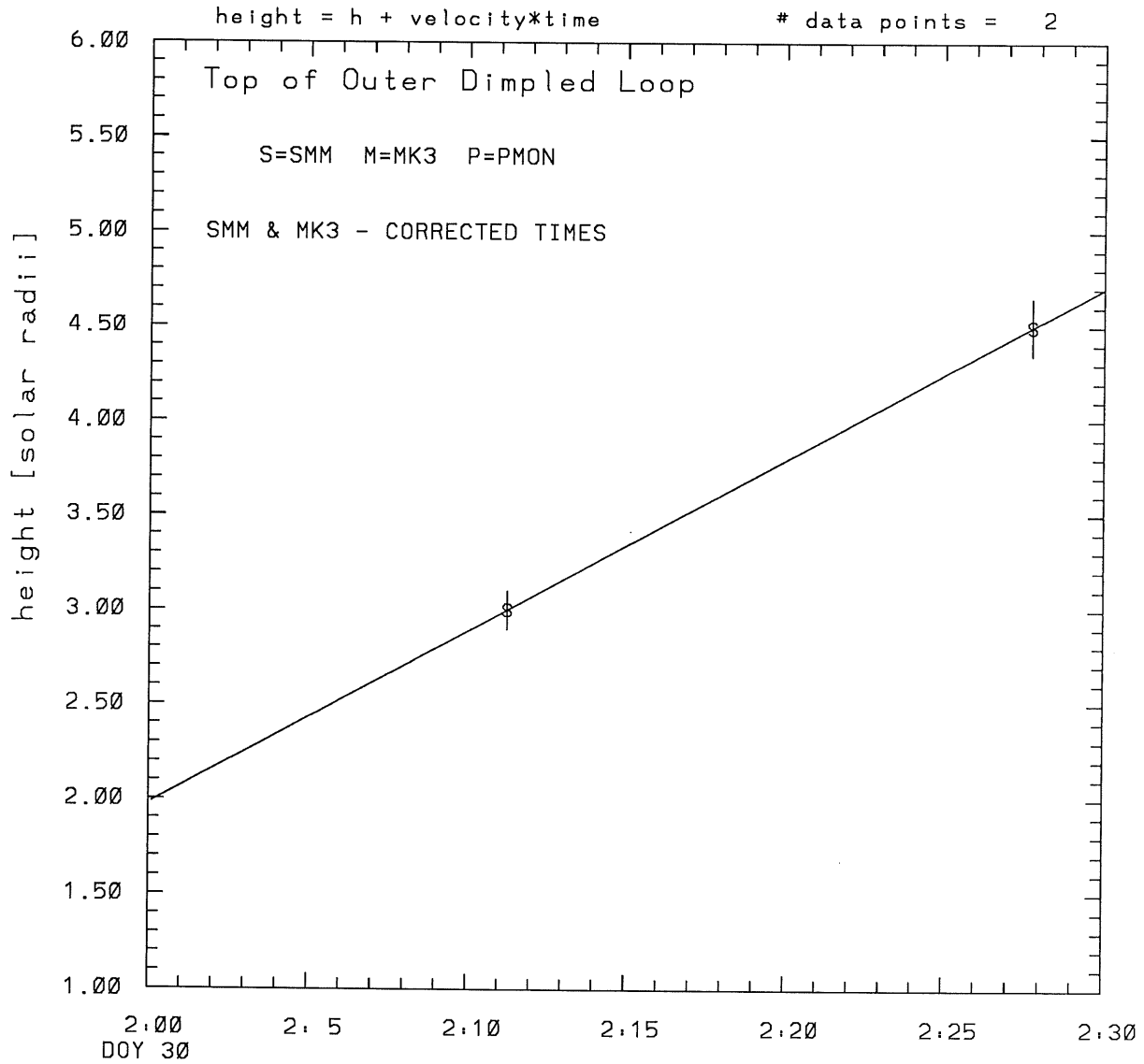


SMM C/P 1989 DOY 30 310 +/- 0 degrees



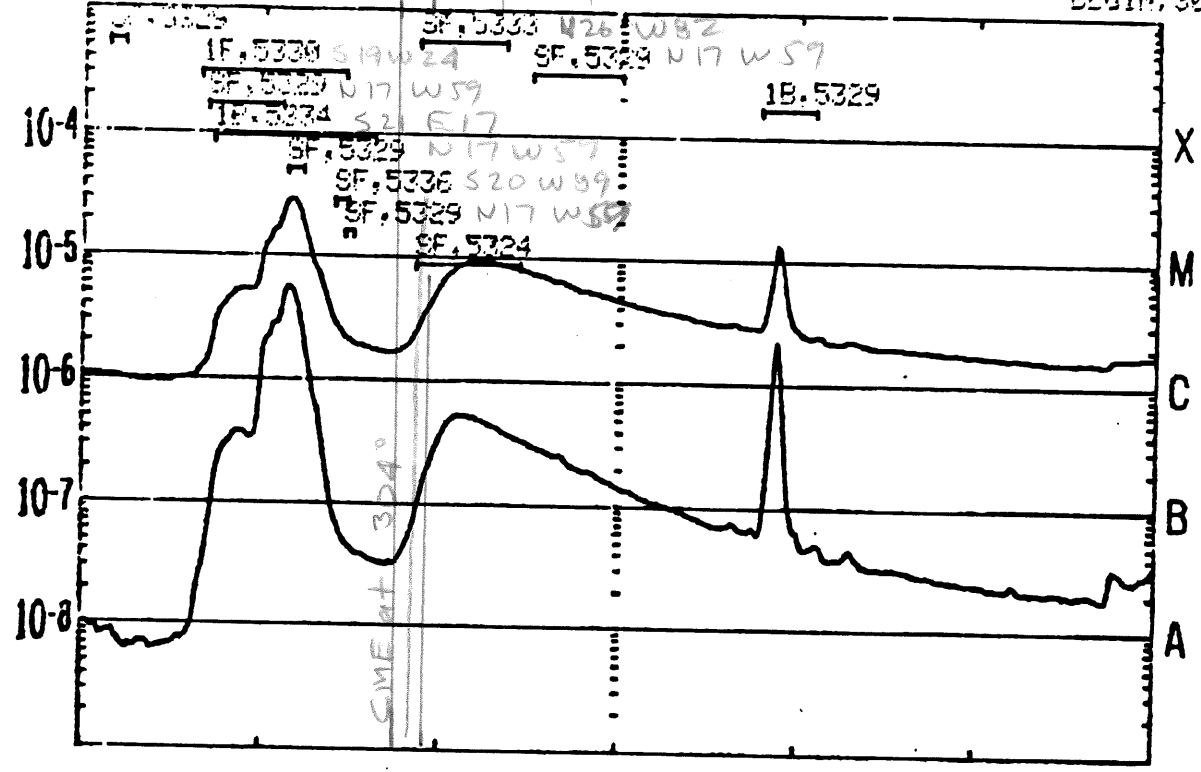
tstart=DOY 30 1.51 +/- 0.0 [min.]
radial velocity= 1055. +/- 0. [km/sec]

1989 Day 30

1989 and OPTICAL DATA TOGETHER

BEGIN: 30 JAN 89

Watts meter²



GOES 7 0.5-4.0A
GOES 7 1.0-8.0A
OPTICAL FLARES

Top of Outer Duplexed Loop
[1:51] 1st order only

Top of Prominence Loop
[1:54] 1st order only

Bright Blobs in Prominence
[1:44] 1st order
[1:52] 2nd order

STOP
Ret.

30/0000

30/0300

30/0600

SAA's
NIGHT

GOES-7 1 MIN DATA; OPTICAL FLARE DUR, IMP, REGION

RUN: 2112UT
8 FEB 89

This is a 1 order run

INPUT:

year	doy	time	radii	error in radius	angle	error in angle	datatype
1989	30	2:11:16	3.00	+/- 0.10	310.0	+/- 0.5	SMM
1989	30	2:27:46	4.50	+/- 0.15	310.0	+/- 0.5	SMM

Structure being measured:

Top of Outer Dimpled Loop

OUTPUT:

START TIME:

Event began at $t = 0 + -0.107E+02 \pm 0.000E+00$ [minutes]

In more convenient units:

Event began at DOY 30 1:51 $\pm 0.000E+00$ [minutes]

Origin defined at DOY 30 2: 0

RADIAL INFORMATION:

RADIAL VELOCITY = 1055. \pm 0. km/sec

The computed RADIAL coefficients and errors FROM NLLST2 are:

$c(1) = 0.198E+01 \pm 0.395E-05$ [solar radii]
 $c(2) = 0.909E-01 \pm 0.219E-06$ [radii/min]
 $c(2) = 0.105E+04 \pm 0.254E-02$ [km/sec]
 $c(3) = 0.000E+00 \pm 0.000E+00$ [radii/min**2]
 $c(3) = 0.000E+00 \pm 0.000E+00$ [km/sec**2]

ANGULAR INFORMATION:

ANGULAR VELOCITY = 0.0000E+00 \pm 0.0000E+00[radians/sec]

The computed ANGULAR coefficients and errors FROM NLLST2 are:

$a(1) = 310. \pm 0.$ [degrees]
 $a(2) = 0.000E+00 \pm 0.000E+00$ [degrees/min]
 $a(2) = 0.000E+00 \pm 0.000E+00$ [rad/sec]
 $a(3) = 0.000E+00 \pm 0.000E+00$ [degrees/min**2]
 $a(3) = 0.000E+00 \pm 0.000E+00$ [rad/sec**2]

THE TANGENTIAL AND TOTAL VELOCITIES AT EACH DATA POINT ARE:

The TANGENTIAL velocity at 2:11 = 0. km/sec

The TOTAL velocity at 2:11 = 1055. km/sec

The TANGENTIAL velocity at 2:27 = 0. km/sec

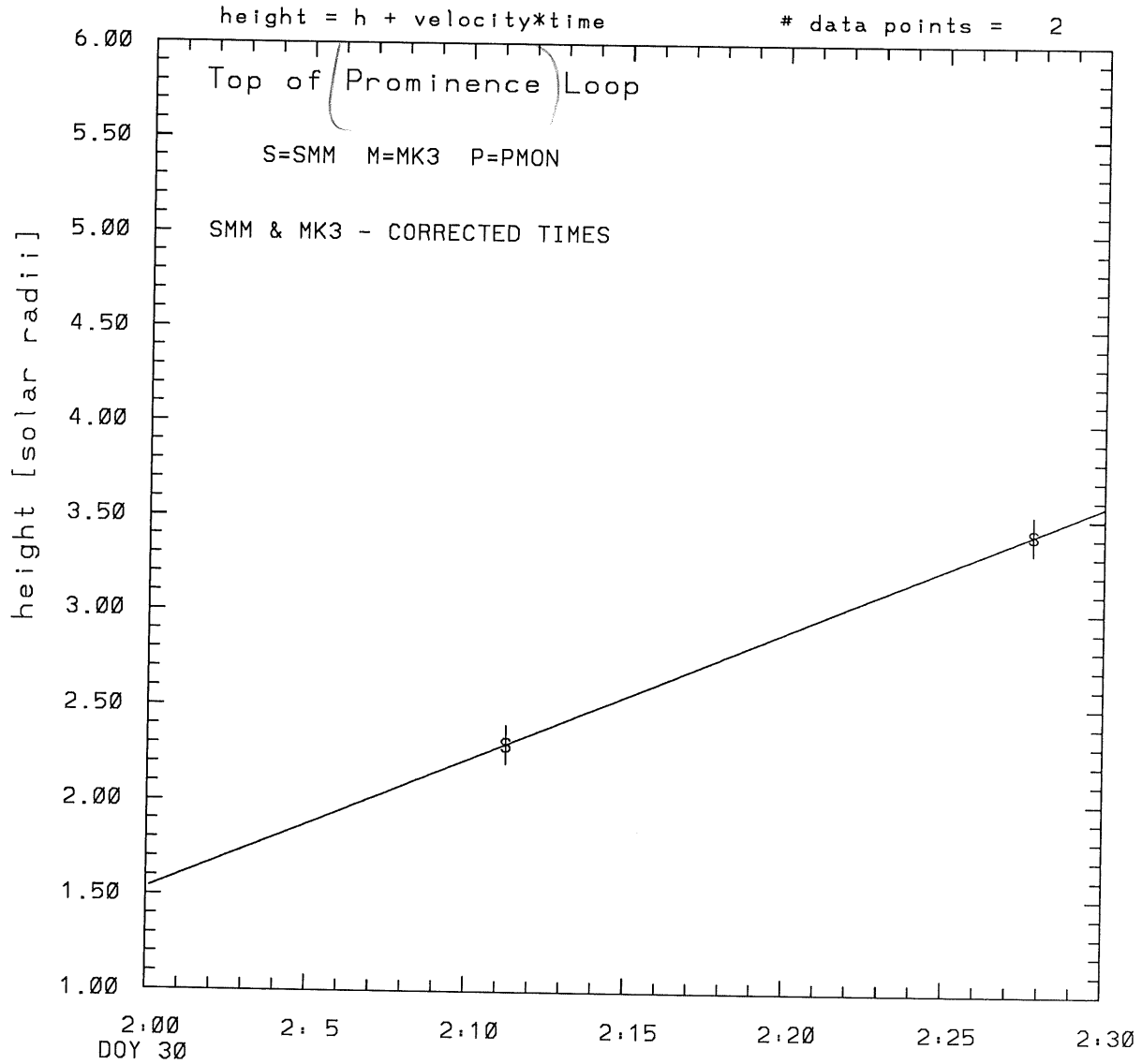
The TOTAL velocity at 2:27 = 1055. km/sec

The following info is for estimating goodness of the fit

Number data points = number of coefficients. No error analysis is possible.

Correlation coefficient is not computable!

SMM C/P 1989 DOY 30 305 +/- 0 degrees



tstart=DOY 30 1.54 +/- 0.0 [min.]
radial velocity= 787. +/- 0. [km/sec]

This is a 1 order run

INPUT:

year	day	time	error in radii	error in radius	error in angle	error in angle	datatype
1989	30	2:11:16	2.30 +/- 0.10	305.0 +/- 0.5			SMM
1989	30	2:27:46	3.42 +/- 0.10	305.0 +/- 0.5			SMM

Structure being measured:

Top of Prominence Loop

OUTPUT:

START TIME:

Event began at $t = 0 + -0.789E+01 +/- 0.000E+00$ [minutes]

In more convenient units:

Event began at DOY 30 1:54 +/- 0.000E+00 [minutes]

Origin defined at DOY 30 2: 0

RADIAL INFORMATION:

RADIAL VELOCITY = 787. +/- 0. km/sec

The computed RADIAL coefficients and errors FROM NLLST2 are:

c(1) = 0.154E+01 +/- 0.433E-06 [solar radii]
c(2) = 0.679E-01 +/- 0.204E-07 [radii/min]
c(2) = 0.787E+03 +/- 0.237E-03 [km/sec]
c(3) = 0.000E+00 +/- 0.000E+00 [radii/min**2]
c(3) = 0.000E+00 +/- 0.000E+00 [km/sec**2]

ANGULAR INFORMATION:

ANGULAR VELOCITY = 0.0000E+00 +/- 0.0000E+00 [radians/sec]

The computed ANGULAR coefficients and errors FROM NLLST2 are:

a(1) = 305. +/- 0. [degrees]
a(2) = 0.000E+00 +/- 0.000E+00 [degrees/min]
a(2) = 0.000E+00 +/- 0.000E+00 [rad/sec]
a(3) = 0.000E+00 +/- 0.000E+00 [degrees/min**2]
a(3) = 0.000E+00 +/- 0.000E+00 [rad/sec**2]

THE TANGENTIAL AND TOTAL VELOCITIES AT EACH DATA POINT ARE:

The TANGENTIAL velocity at 2:11 = 0. km/sec

The TOTAL velocity at 2:11 = 787. km/sec

The TANGENTIAL velocity at 2:27 = 0. km/sec

The TOTAL velocity at 2:27 = 787. km/sec

The following info is for estimating goodness of the fit

Number data points = number of coefficients. No error analysis is possible.

Correlation coefficient is not computable!