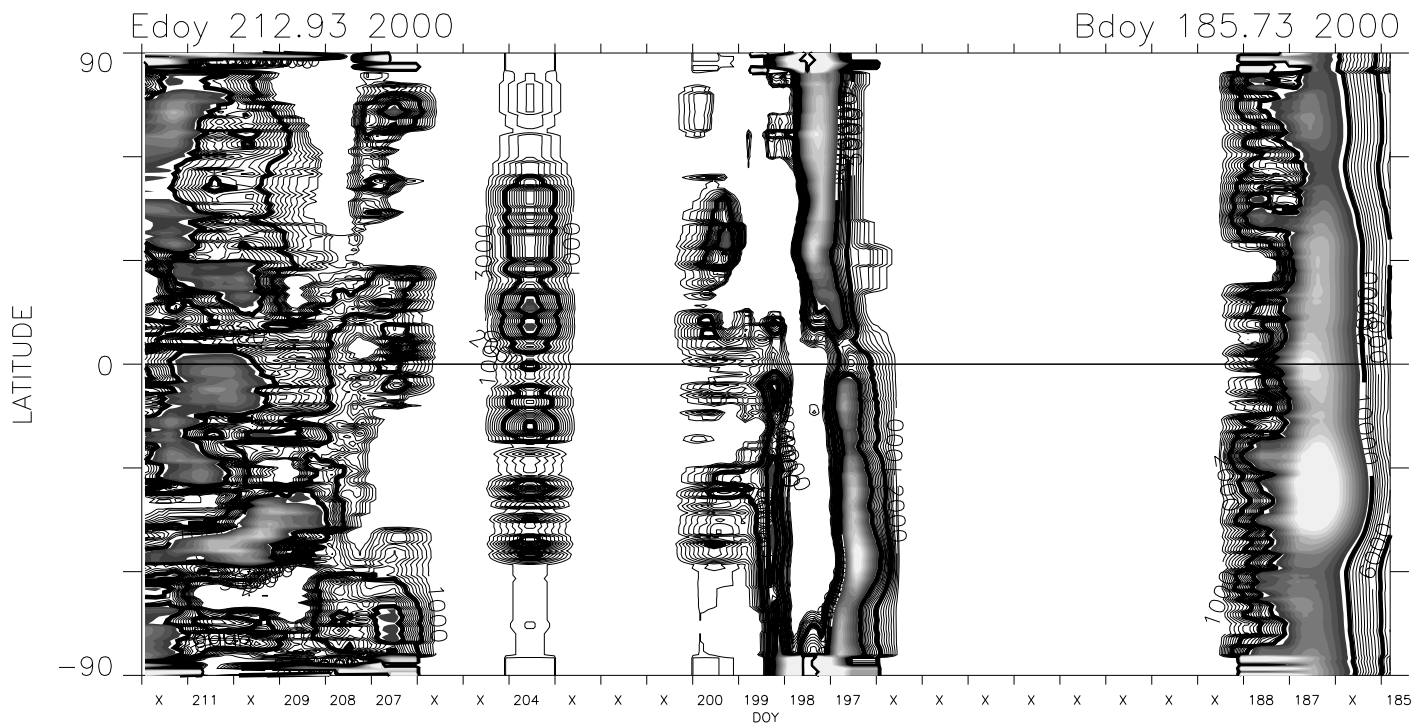
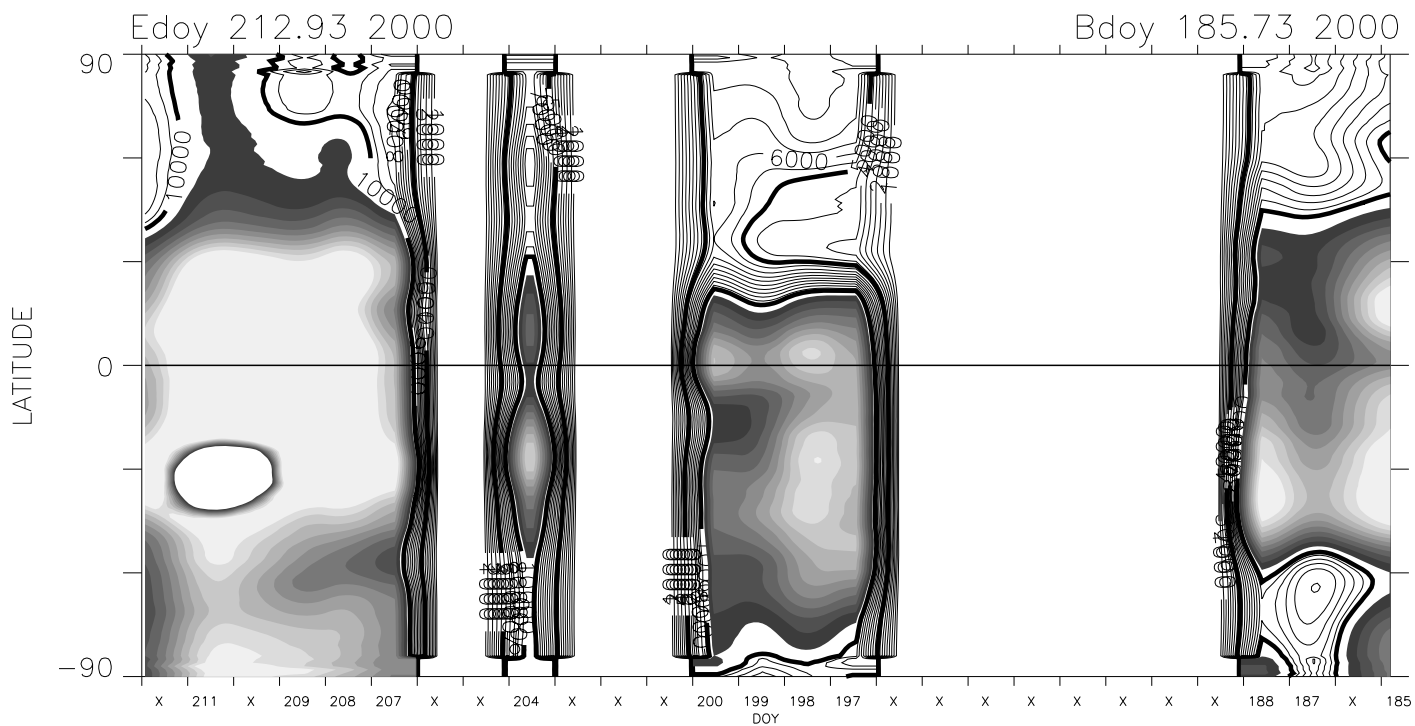


Carrington Rotation 1965

Mk4 East limb



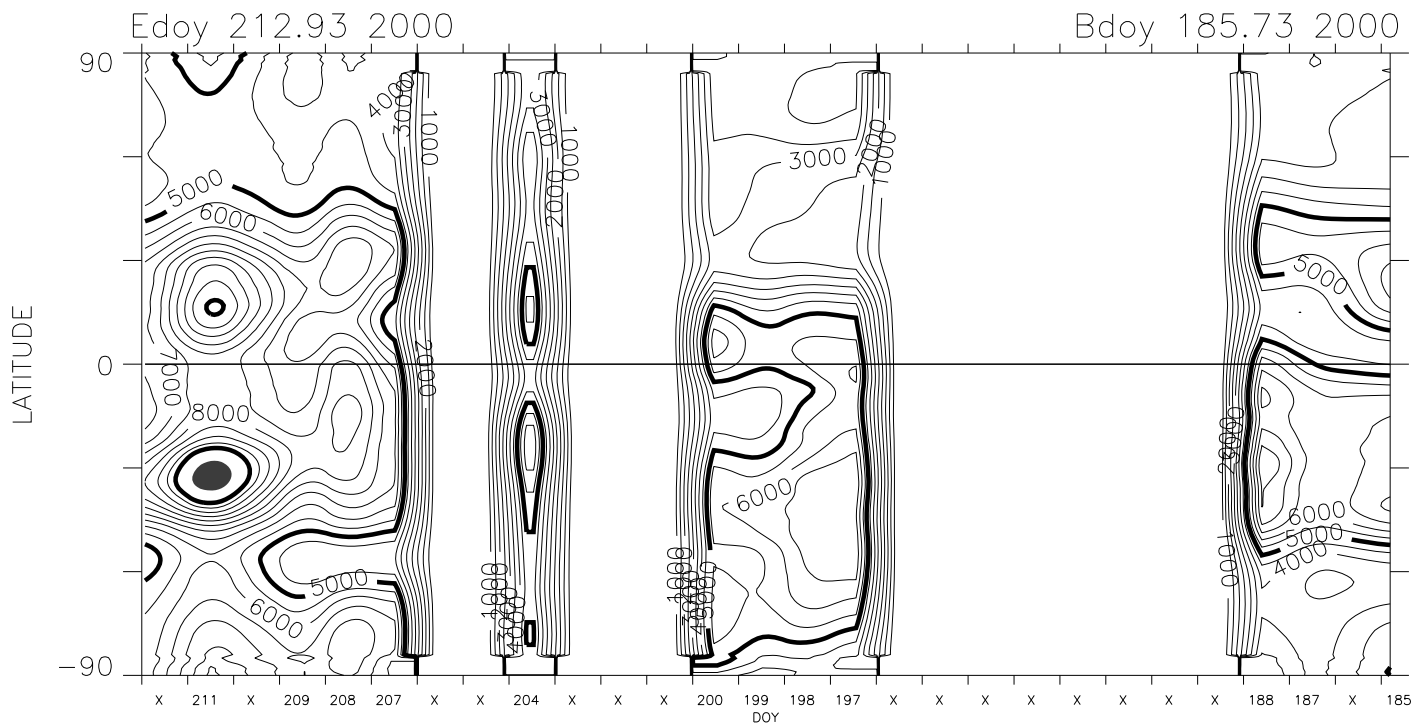
1.15 Rsun version 1 cal + Feb 2002 opal cor. pB units : $1.0e-10$ Bsun



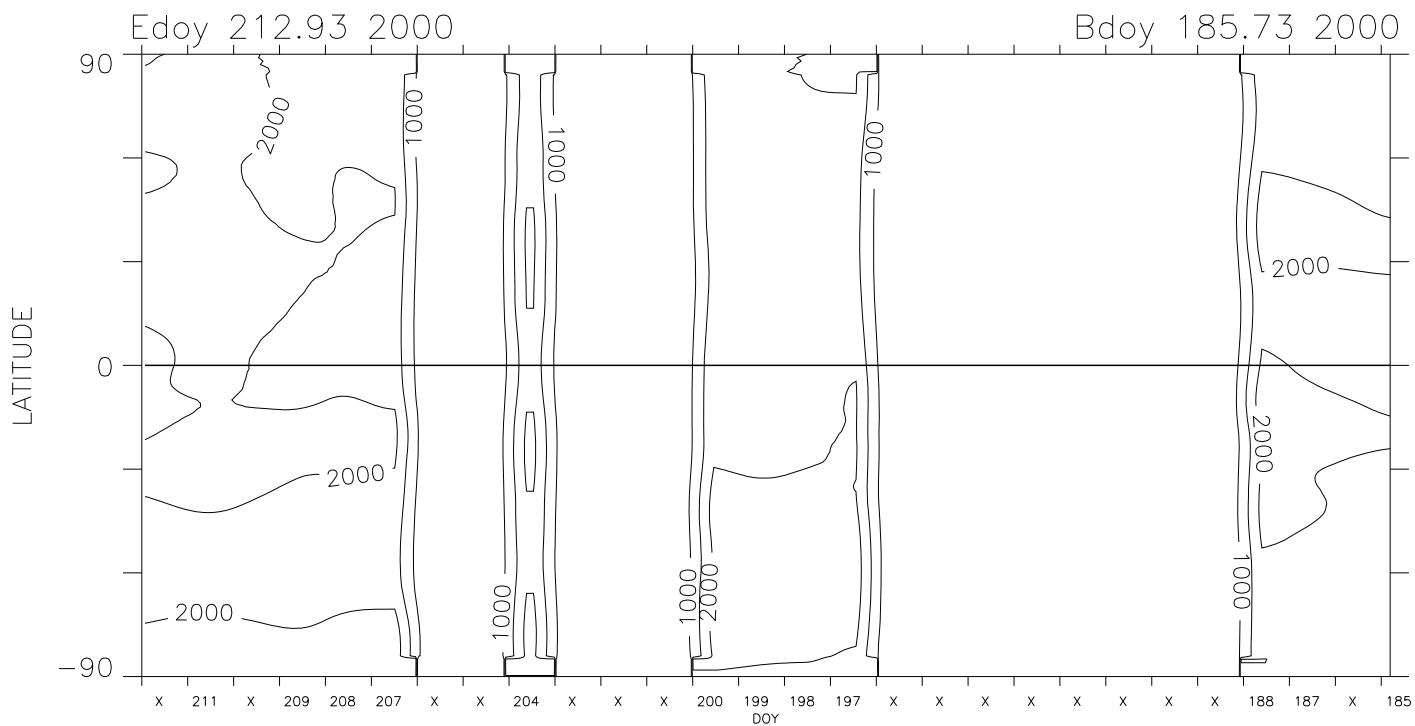
1.20 Rsun version 1 cal + Feb 2002 opal cor. pB units : $1.0e-10$ Bsun

Carrington Rotation 1965

Mk4 East limb



1.36 R_{sun} version 1 cal + Feb 2002 opal cor. pB units : 1.0e-10 B_{sun}



1.74 R_{sun} version 1 cal + Feb 2002 opal cor. pB units : 1.0e-10 B_{sun}