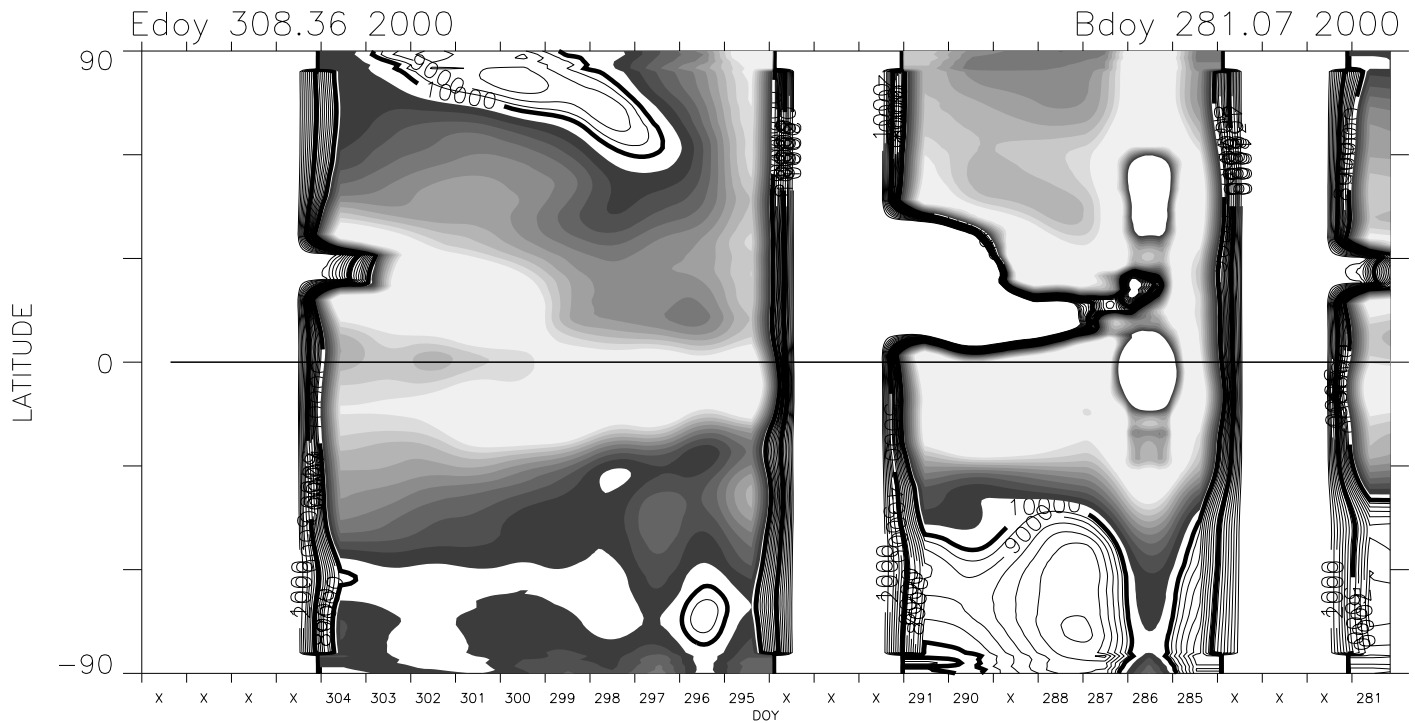
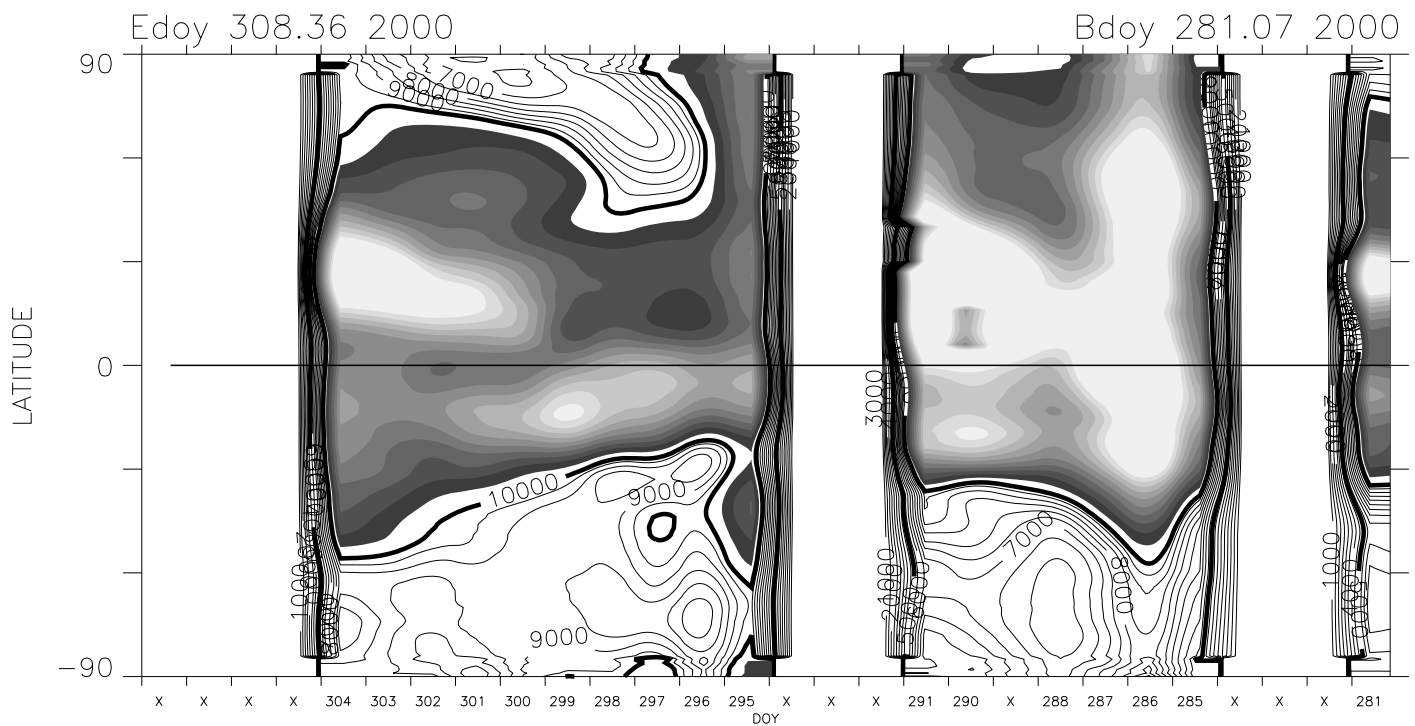


Carrington Rotation 1968

Mk4 West limb

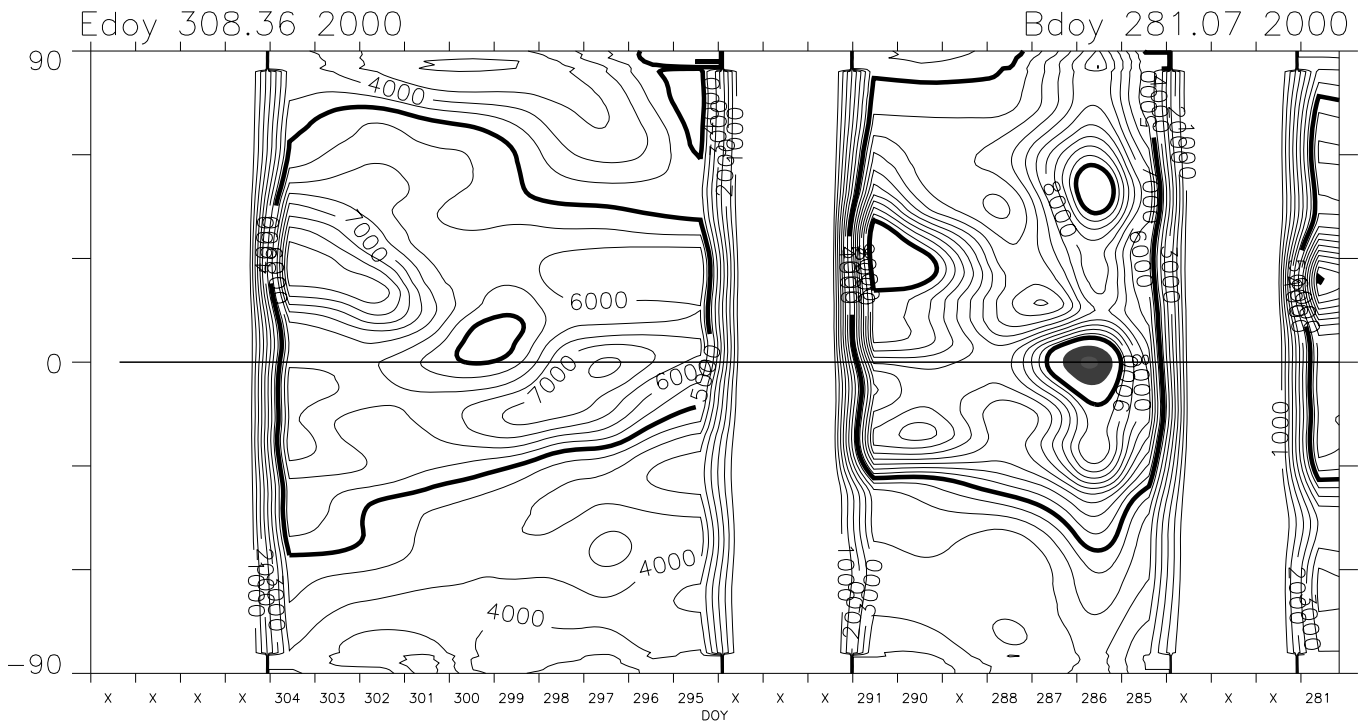


1.15 R_{sun} version 1 cal + Feb 2002 opal cor. pB units : 1.0e-10 B_{sun}

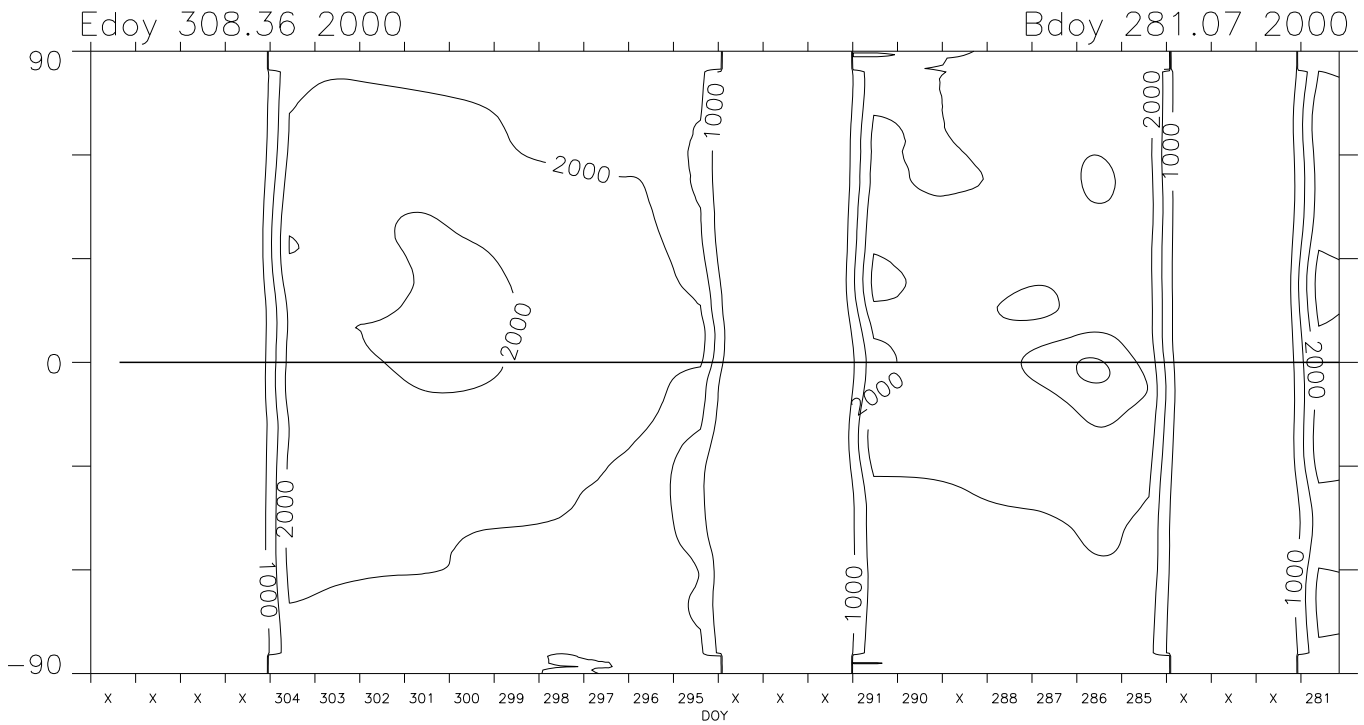


1.20 R_{sun} version 1 cal + Feb 2002 opal cor. pB units : 1.0e-10 B_{sun}

Carrington Rotation 1968 Mk4 West limb



1.36 R_{sun} version 1 cal + Feb 2002 opal cor. pB units : 1.0e-10 B_{sun}



1.74 R_{sun} version 1 cal + Feb 2002 opal cor. pB units : 1.0e-10 B_{sun}