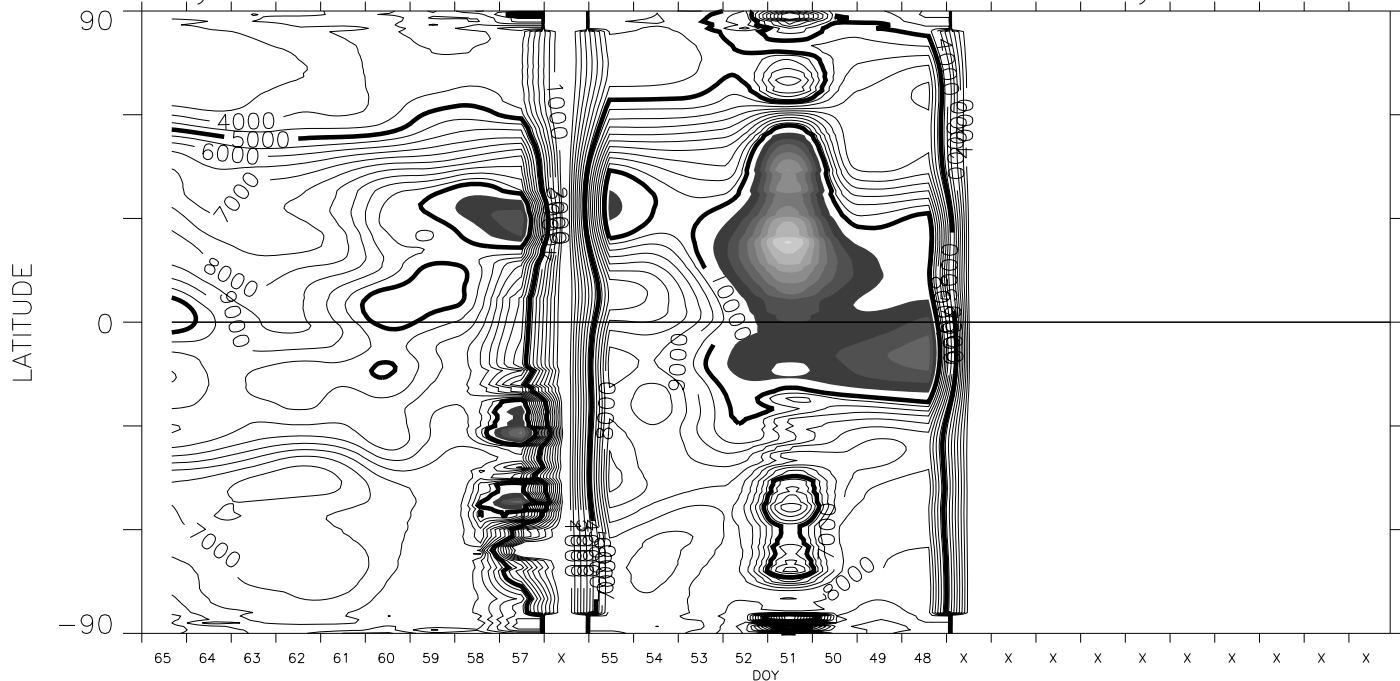


# Carrington Rotation 1973 Mk4 East limb

Eday 65.33 2001

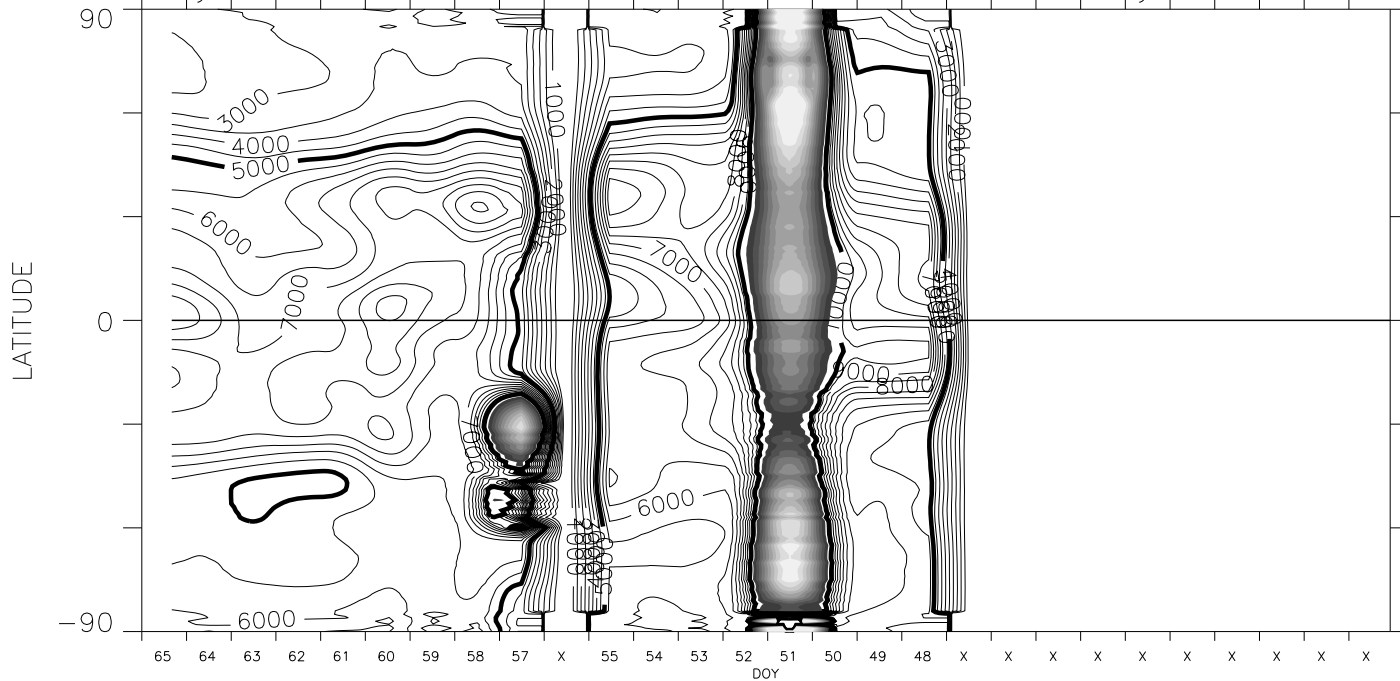
Bday 38.00 2001



1.15 Rsun version 1 cal + Feb 2002 opal cor. pB units : 1.0e-10 Bsun

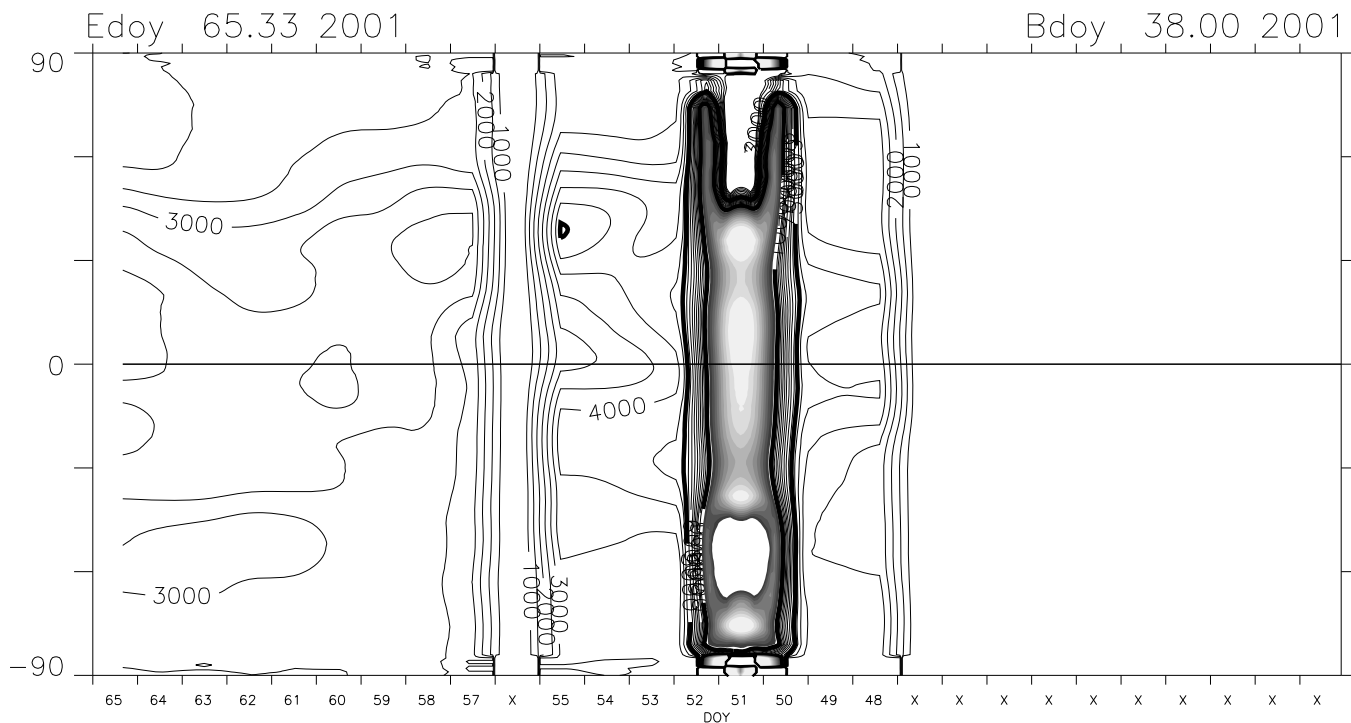
Eday 65.33 2001

Bday 38.00 2001

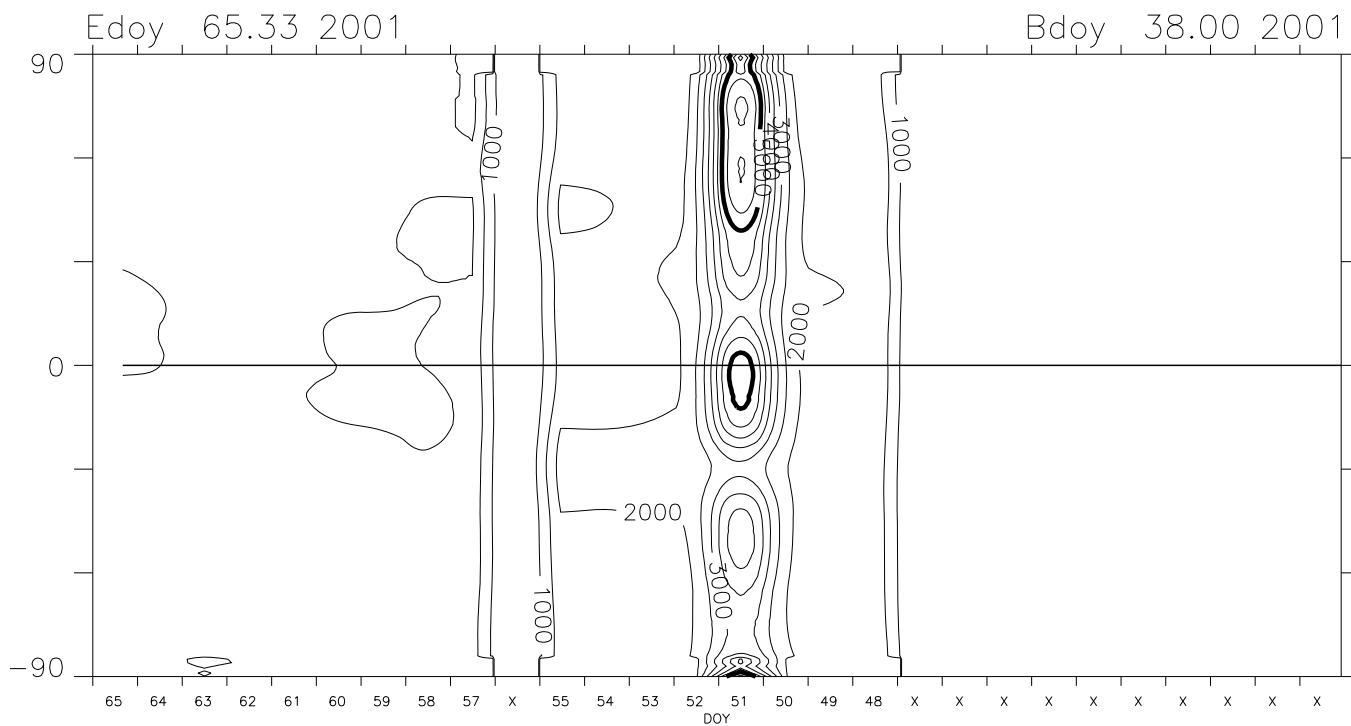


1.20 Rsun version 1 cal + Feb 2002 opal cor. pB units : 1.0e-10 Bsun

# Carrington Rotation 1973 Mk4 East limb



1.36 R<sub>sun</sub> version 1 cal + Feb 2002 opal cor. pB units : 1.0e-10 B<sub>sun</sub>



1.74 R<sub>sun</sub> version 1 cal + Feb 2002 opal cor. pB units : 1.0e-10 B<sub>sun</sub>