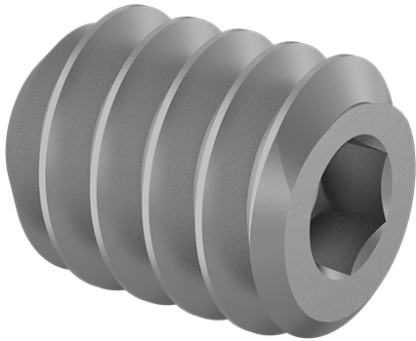




Stainless Steel Flat-Tip Set Screw

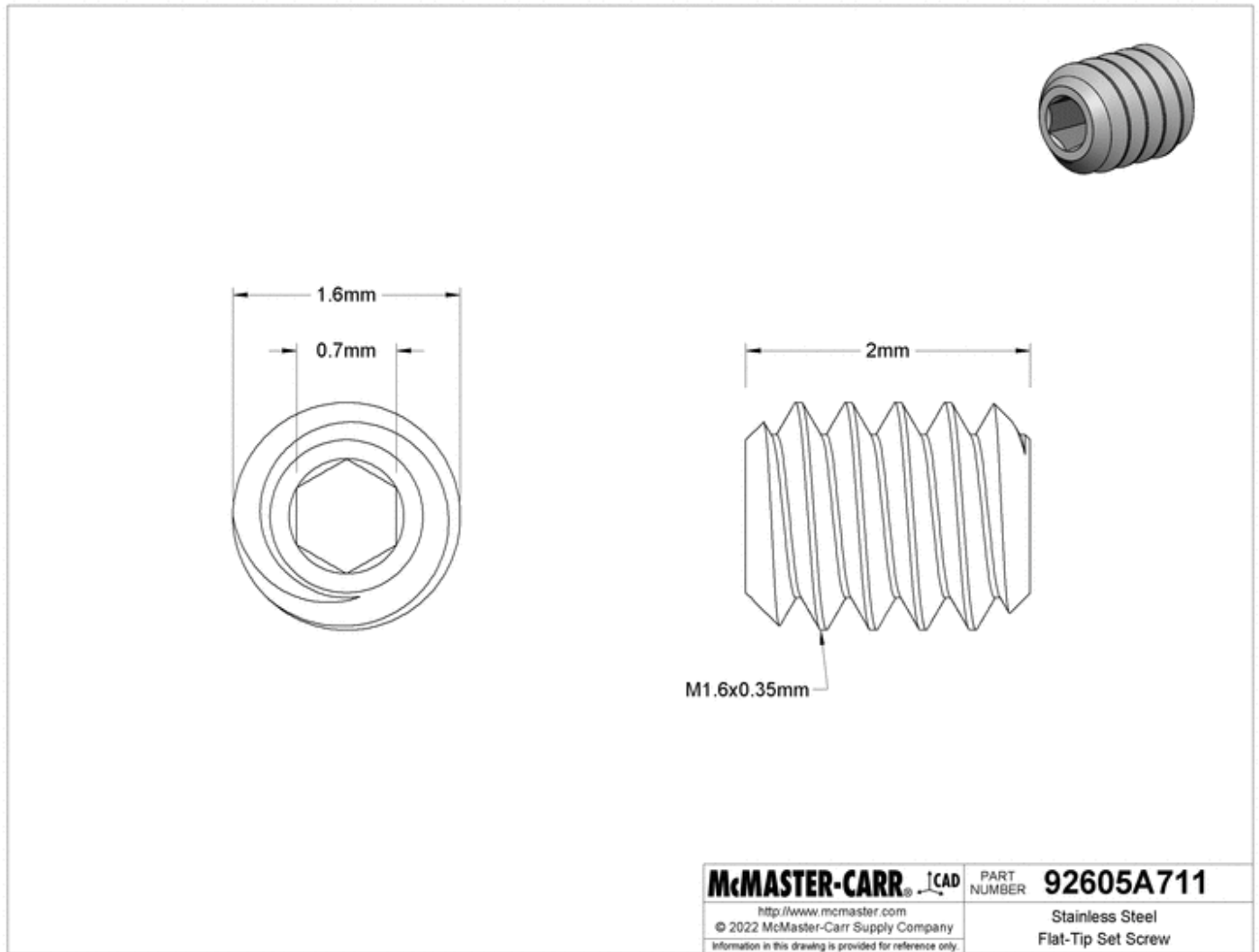
18-8, M1.6 x 0.35 mm Thread, 2 mm Long

\$15.33 per pack of 50
92605A711



| | |
|-----------------------|---|
| Material | 18-8 Stainless Steel |
| Thread Size | M1.6 |
| Thread Pitch | 0.35 mm |
| Length | 2 mm |
| Drive Size | 0.7 mm |
| Hardness | Not Rated |
| Specifications Met | DIN 913, ISO 4026 |
| Thread Type | Metric |
| Thread Spacing | Coarse |
| Thread Fit | Class 6g |
| Thread Direction | Right Hand |
| Drive Style | Hex |
| Tip Type | Flat |
| Head Type | Headless |
| System of Measurement | Metric |
| RoHS | RoHS 3 (2015/863/EU) Compliant |
| REACH | REACH (EC 1907/2006) (06/14/2023, 235 SVHC) Compliant |
| DFARS | Not Specialty Metals Compliant |
| Country of Origin | Taiwan |
| Schedule B | 731815.9000 |
| ECCN | EAR99 |

18-8 stainless steel set screws are chemical resistant and may be mildly magnetic. The tip makes good contact on flat surfaces and allows you to make frequent adjustments with minimal surface damage. Length listed is the overall length.



The information in this 3-D model is provided for reference only.