

**Supporting Information for “Atmospheric and Ionospheric
Responses to Hunga-Tonga Volcano Eruption Simulated by
WACCM-X”**

H.-L. Liu,^{1*} W. Wang,¹ J. D. Huba,² P. E. Lauritzen,³ and F. Vitt,^{1,4}
Email: liuh@ucar.edu

1. High Altitude Observatory, National Center for Atmospheric Research,
Boulder, CO, USA,
 2. Syntek Technologies, Fairfax, VA, USA,
 3. Climate and Global Dynamics, National Center for Atmospheric
Research, Boulder, CO, USA,
 4. Atmospheric Chemistry Observations and Modeling, National Center for
Atmospheric Research, Boulder, CO, USA.
- (*) Corresponding author

Contents of this file

1. Figure S1
2. Figure S2

Introduction This Supporting Information includes two figures (Figure S1 and Figure S2).

Figure S1. Surface pressure perturbation (period < 1 hour) at UT1800 hour. Wave reflection from the Andes and L'_1 mode can be seen, with amplitudes of about 10 Pa.

Figure S2. Longitude-height cross section of zonal wind at 44°N at UT1536 hour.

Figure S3. Zonal (upper), vertical (middle), and TEC (lower) perturbations (period < 1 hour) at UT0855 hour.

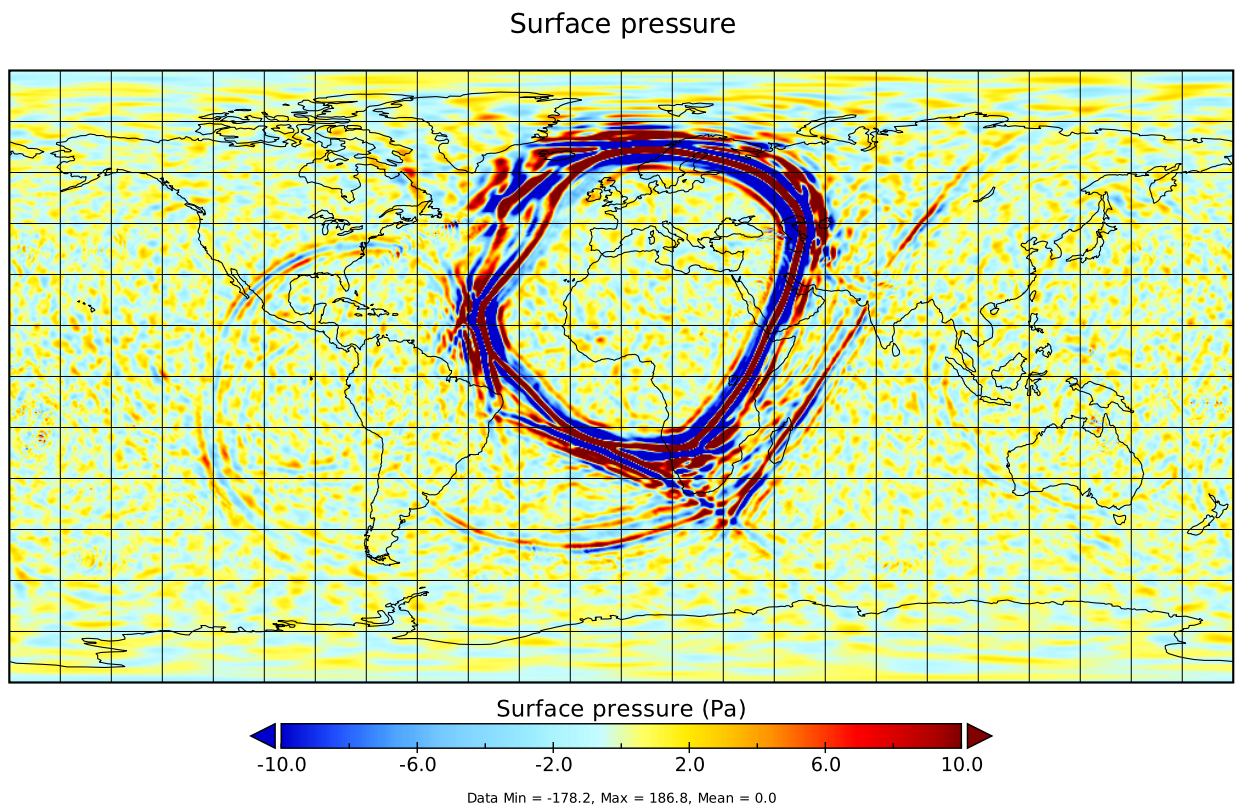


Figure S1: Surface pressure perturbation (period < 1 hour) at UT1800 hour. Wave reflection from the Andes and L'_1 mode can be seen, with amplitudes of ~ 10 Pa.

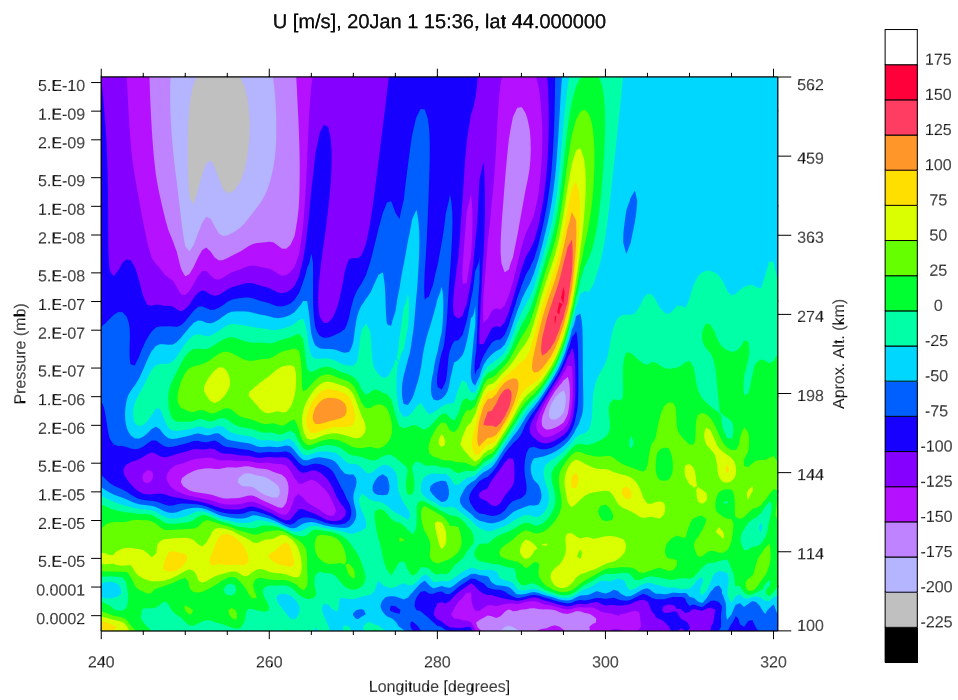


Figure S2: Longitude-height cross section of zonal wind at 44°N at UT1536 hour.

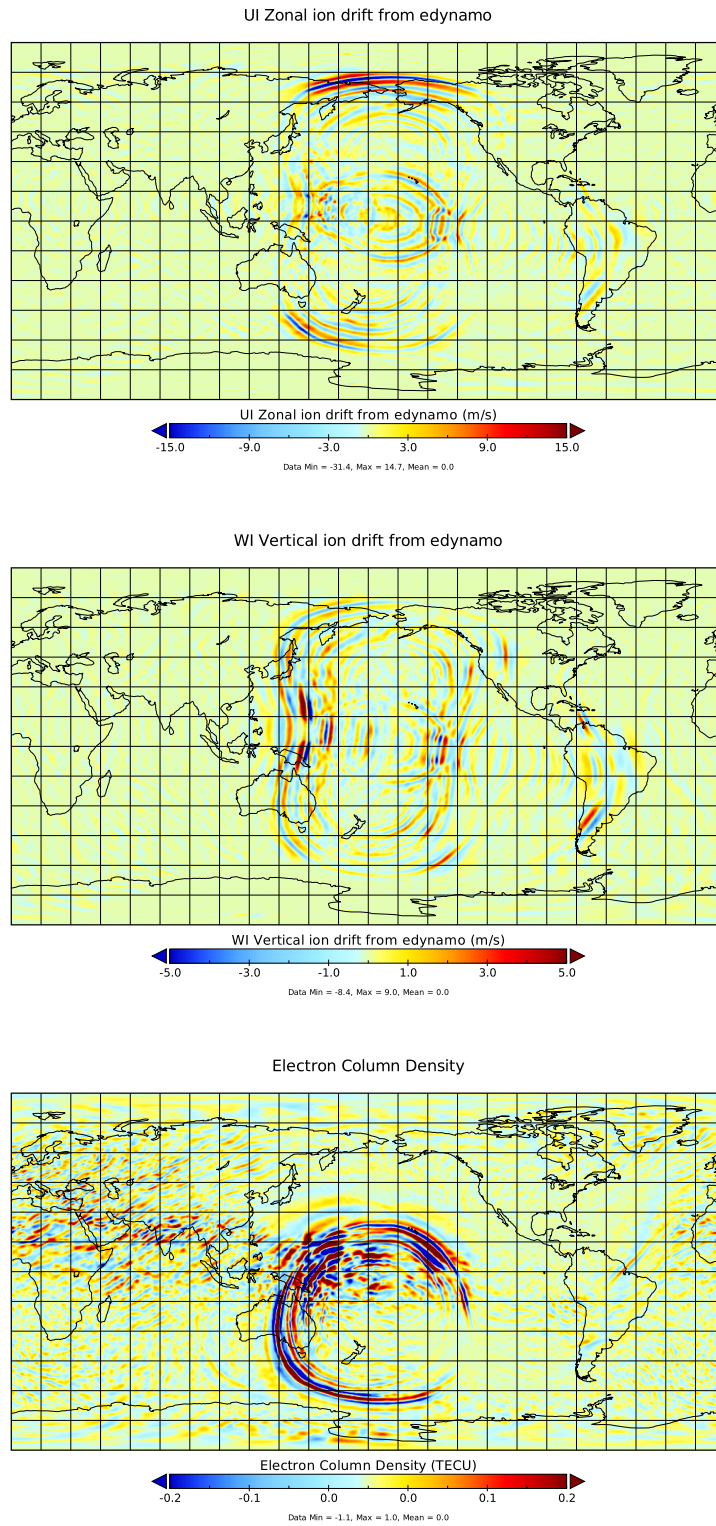


Figure S3: Zonal (upper), vertical (middle), and TEC (lower) perturbations (period < 1 hour) at UT0855 hour.